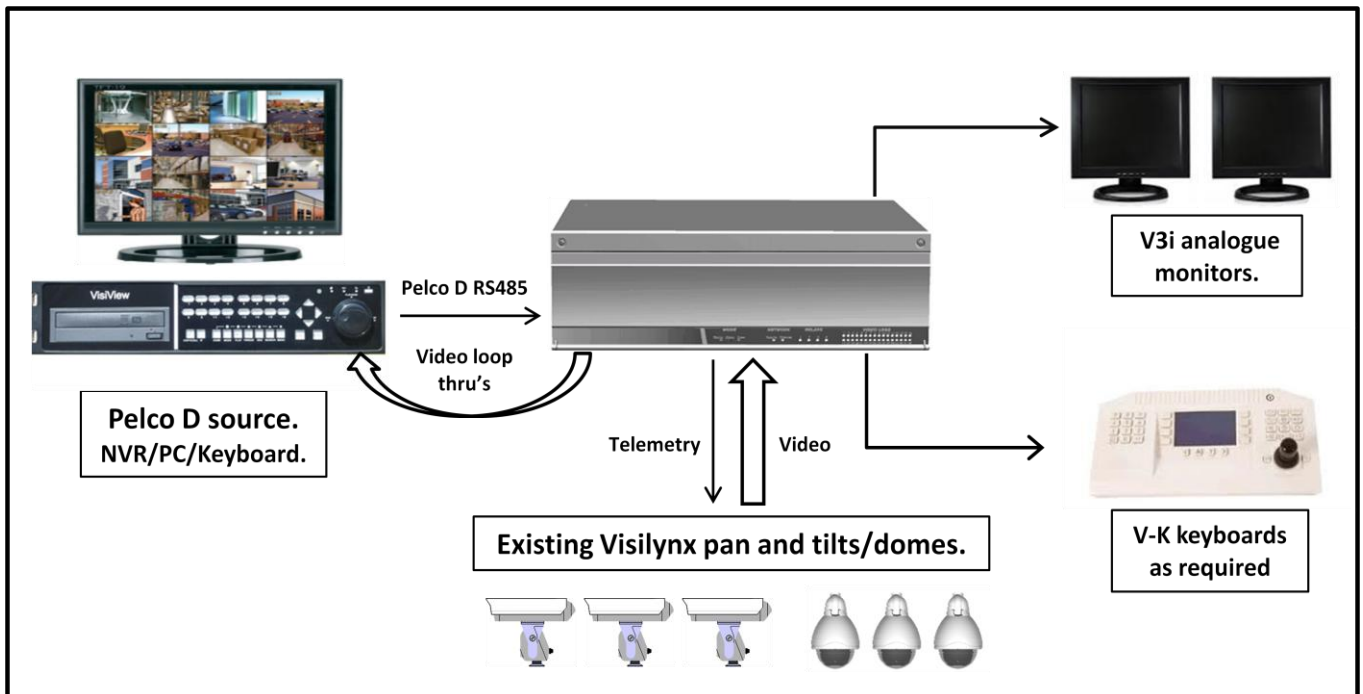




## V3i-P

# VISILYNX V3i camera control via Pelco D RS485 input



The Pelco D source is connected to a 9 way d-sub communication port on the rear of the V3i matrix, loop thru's take video from the V3i to the Pelco D source. View and control your existing Visilynx cameras via the internet.

Please Note:

Video switching commands will not work when using Pelco D, they will still work via the V-K keyboard.

The V3i unit will need to be sent to us to be upgraded, it will take 1 - 2 days to upgrade.

**Part code**

**V3i-P Visilynx camera control via Pelco D RS485**

**Williams Electronics Ltd**  
Tel: +44 (0)2921 660 234

**www.w-e.co.uk**  
Fax : +44 (0)2921 660 270,

**Issue 3.1**  
Email : sales@w-e.co.uk



Whilst every effort has been made to ensure that all information contained in this document is correct at the time of publication, due to our policy of continuous product improvement, the company reserves its right to change any information contained herein without notice.  
Williams Electronics Limited trading as MOLYNX Systems.

## Operation

### Camera control input telemetry Pelco D RS485 (tested using a Pelco KBD300A)

- Pan, tilt, zoom, focus, iris, auto iris and auxiliary functions of, wash, wipe, camera and lamps.
- 99 preset positions per camera head assembly (camera dependent).
- RS485 Pelco D protocol. 2400, N,8, 1 (changeable via VisiPC)
- 4 input ports available Port 1 uses monitor 1, Port 2 uses monitor 2.... you must have the ports and associated monitors free on your system (the monitors used in this setup can't be used as normal monitors)

Visilyn Function	Pelco Keystroke Needed (command)
Wash On	1 then AUX On
Wash Off	1 then AUX Off
Wipe On	2 then AUX on
Wipe Off	2 then AUX Off
Cam On	3 then AUX On
Cam Off	3 then AUX Off
Lamps On	4 then AUX On
Lamps Off	4 then AUX Off

Visilyn Function	Pelco Keystroke Needed (command)
Aux Relay On	AUX On
Aux Relay Off	AUX Off
Preset Store (1 -99)	Number then hold preset button for 2 seconds
Preset Recall (1 – 99)	Number then preset button
Preset Tour	1 Pattern
Sequence	Pattern

The following Visilyn commands are not available via Pelco D control:

Auto Iris On, Auto Iris Off, Lens Slow On, Lens Slow Off, Pattern and Camera Reset  
No Camera to monitor selection is possible when using Pelco D

## VisiPC

VisiPC version 2.01.0032 or above, the V3i should be at version 2.58 or above.

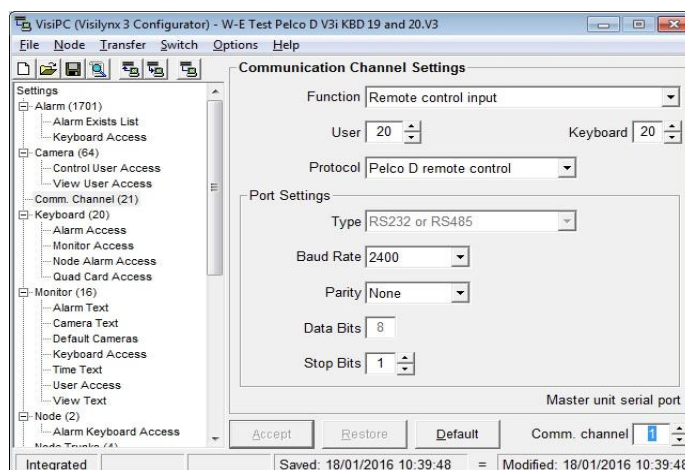
- In VisiPC under Communication Channel Settings go to Channels 12, 17 and 20 select Port Disabled and 'Accept'.
- Go to Communication Channel 1 and select the settings below. (Change the Keyboard number last before 'Accepting').
- Repeat the settings for any further communication channels required but decrease the User and Keyboard numbers by one for each channel ie: the second channel would be User 19 and Keyboard 19.
- Under User Settings enable Camera Access and Camera View for any **Users** required for the communication channel/s.
- Under Keyboard Settings tick Query Alert for any **Keyboards** required for the communication channel/s.

### Communication Channel Settings

Function: Remote control input  
User: 20  
Protocol: Pelco D remote control

Port Settings  
Type: RS232 or RS485  
Baud Rate: 2400  
Parity: None  
Data Bits: 8  
Stop Bits: 1

**LAST Keyboard: 20**



- When complete 'Accept' the changes, save the configuration file under an appropriate name ie: 'Pelco D control on com X' and then 'Send' it to the V3i.
- **IMPORTANT: IF NO V-K KEYBOARDS ARE PHYSICALLY CONNECTED ENSURE THAT COM 2 IS SET UP FOR REMOTE CONTROL INPUT/PCCON2/3, DEFAULT SETTING FOR THIS CHANNEL**

## Wiring setup

V3i Port 1, 3 and 4: Pin 9 = RS485 + (A) Pin 5 = RS485 - (B) Pin 6 RS485 GND  
V3i Port 2: Pin 2 = RS232 TX Pin 3 = RS232 RX Pin 5 RS232 GND

Before attempting to connect or operate this product, please read the V3i instruction manual.



Williams Electronics Ltd  
Tel: +44 (0)2921 660 234

www.w-e.co.uk  
Fax: +44 (0)2921 660 270,

Issue 3.1  
Email: sales@w-e.co.uk

Whilst every effort has been made to ensure that all information contained in this document is correct at the time of publication, due to our policy of continuous product improvement, the company reserves its right to change any information contained herein without notice.  
Williams Electronics Limited trading as MOLYNX Systems.